

# Who we are

**AIM GeoAnalytics** is an analytical services and **geologic consulting** company located in Missoula, Montana, and open to business around the world. Being surrounded by the tranquility of the Big Sky State inspires the way we do business. Our highly skilled professionals take the time to **listen to our clients** and develop **creative and customized solutions** that help our industry partners to **reduce risk and cost**, while providing **unmatched customer service**.

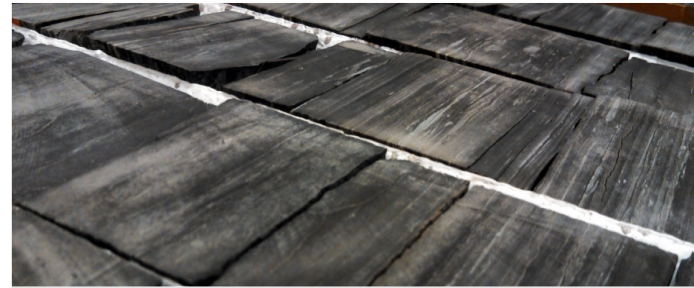


*AIM's global experience*

## Our Experts:

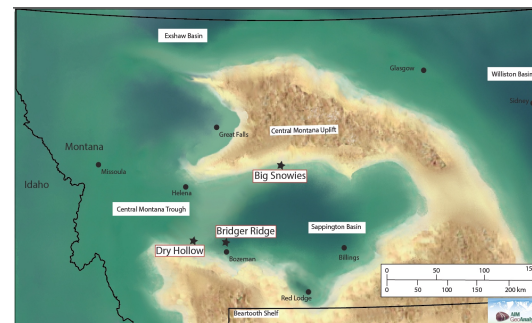
- Have a combined 80+ years of experience in the energy industry and geoscience research
- Specialize in unconventional and mixed systems

# What we do



## Our services include:

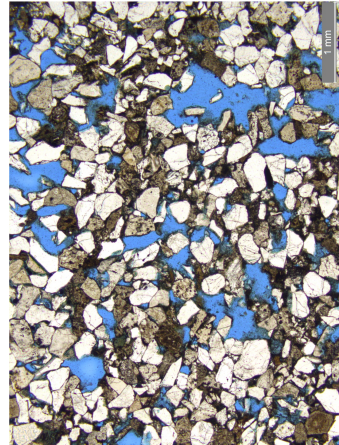
- Core description
- Thin section description
- XRD, XRF, SEM-EDS, and TOC analyses
- Integrated seismic/stratigraphic interpretation and geologic modeling
- Geodata management and analysis
- Paleogeographic reconstruction
- GIS mapping
- Customized workshops and field trips
- Comprehensive geologic reports
- Client-focused R & D
- Big Data-driven basin analysis
- Consulting
- Core storage and sampling



# Why work with AIM

## We provide better service:

- Client communication is our priority
- Premier, personalized contract service options



## We go beyond data delivery:

- We work with clients to incorporate client data and case studies into integrated interpretations
- We customize workshops and courses to enhance impact of our services on client assets

## We deliver timely and cost sensitive results:

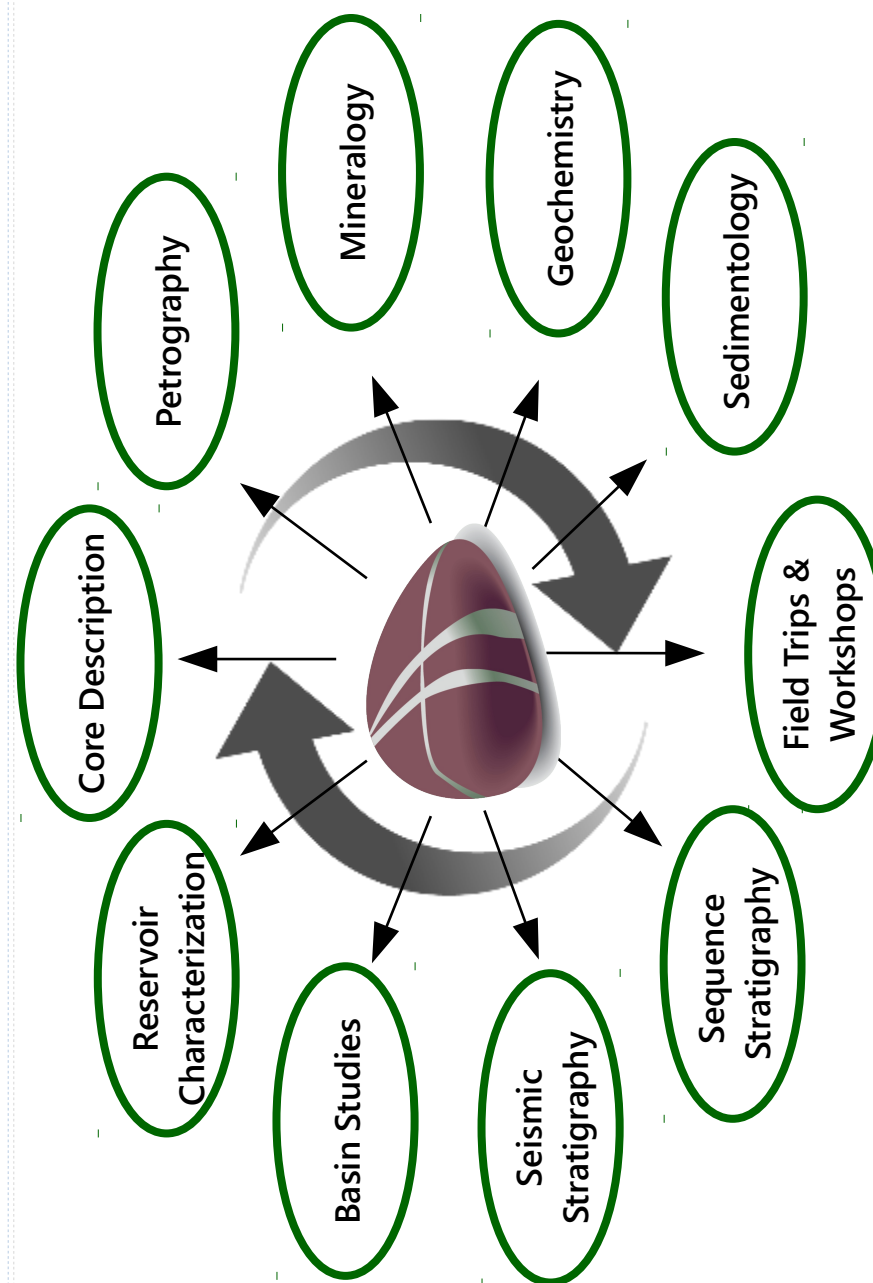
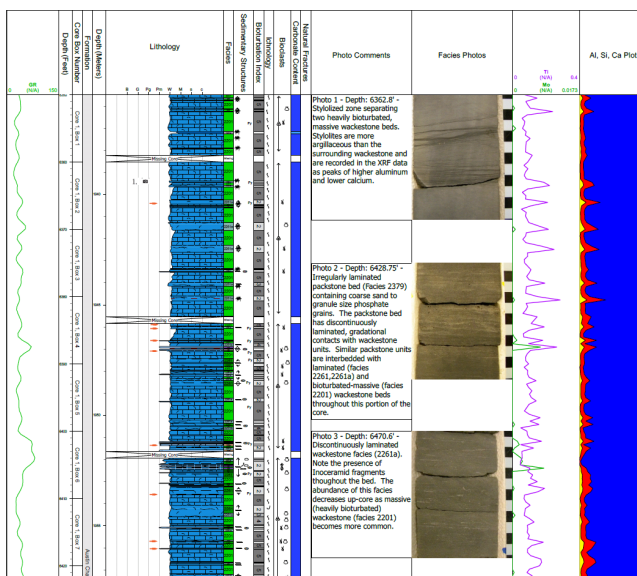
- We provide fit-for-purpose analyses
- We deliver results at a significant time advantage to our clients
- We work with clients to maintain flexibility with project priorities
- We work with our clients to fit within their budget



# Our Expertise

## Key North American Projects

- **Permian Basin**
  - Strawn to Wolfcamp
- **Williston and Montana Basins**
  - Bakken/Three Forks/Sappington
- **Powder River Basin**
  - Frontier/Shannon/Parkman
- **Big Horn Basin**
  - Phosphoria/Frontier/Tensleep
- **South/East Texas Basins**
  - Buda/Eagle Ford/Austin Chalk/Woodbine
- **Mid-continent**
- **Eastern Offshore Canada**
- **Cretaceous Interior Seaway**
- **Gulf of Mexico**



# Contact Us

## Choose your level of service!

We deliver services fit to your business needs

- Need support more frequently?

***Become an AIM Premier Customer***

- Have a problem that needs a quick answer?

***Work with us on an as-need basis***

- Need to train your employees?

***Arrange for a customized workshop or field trip***



For more information and a list of full services

Email:

**info@aimgeoanalytics.com**

Phone:

**(406) 926-1000**

Visit our web site:

**www.aimgeoanalytics.com**